

NEOMEM® FLEXPLUS

Resorbable Porcine Collagen Membrane

Neomem® FlexPlus is a single layer collagen membrane derived from porcine peritoneum. Suture pullout testing has shown this membrane to be biomechanically strong yet conformability evaluations demonstrate the ability to adapt to the contour of the surgical site. Neomem FlexPlus hydrates quickly and handling characteristics make surgical placement easy. It can be repositioned easily and placed wet or dry and with either side up. Additionally, in vitro testing of Neomem FlexPlus shows low tissue inflammation and foreign body giant cell response.

COMPARED TO BIO-GIDE®¹:

Stronger

Neomem® FlexPlus has 3 times the suture pull out strength compared to Bio-Gide® and resorption time of 3-4 months. Neomem® FlexPlus can be repositioned once placed.

Supple

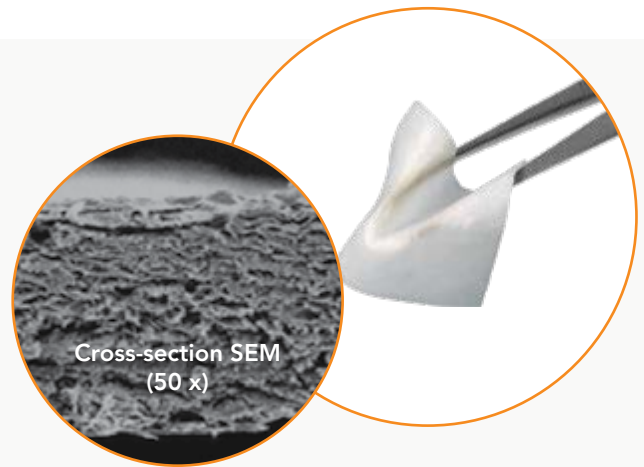
Lack of memory means that Neomem® FlexPlus drapes and conforms to the defect site and since both sides are the same, it is easy to place.

Longer Resorption Rate

Compared to Bio-Gide®, Neomem® FlexPlus' animal in vivo resorption profile suggests that Neomem® FlexPlus is more stable.

Less Inflammation

In vivo pre-clinical testing demonstrates that Neomem® FlexPlus produced a lower level of early inflammation than Bio-Gide®, and Neomem® FlexPlus shows a lower level of giant cell response.



RESORPTION TIME

3 - 4 MONTHS

FEATURES AND BENEFITS

- High suture pull out strength
- Excellent draping
- Lower inflammation
- Easy handling

APPLICATIONS

- GTR
- GBR

AVAILABILITY

15x20 mm, 20x30 mm & 30x40 mm

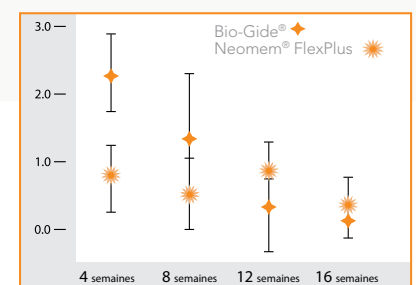


INFLAMMATION SCORE



Evaluation of in vivo inflammation response to Neomem® FlexPlus and Bio-Gide® by histological score system.¹

GIANT CELLS SCORE



Evaluation of in vivo giant cell response to Neomem® FlexPlus and Bio-Gide® by histological score system.¹